



Art Making: Just Imagine! What would you put in your suitcase? (Inspired by *Light for All*)

Students will draw their own suitcase and fill it with things they could not leave behind if they immigrated to a new country.



Video #6

"Just Imagine..."

This video will show students how to draw their own suitcase and think about and draw what they would fill it with.

Find all our videos by going to:

[FresnoArtMuseum.org/VideoAccess](https://www.fresnoartmuseum.org/videoaccess)



3.VA: Cr2.1

Create personally satisfying artwork using a variety of artistic processes and materials.



ESSENTIAL QUESTIONS

- What could you not live without?
- What would you want just for fun?
- What would you take that reminds you of home?



VOCABULARY

Immigration, geometric shapes, organic shapes, wavy lines, primary colors, secondary colors, overlap, lune poems, descriptive words



MATERIALS

- 2 sheets of 8.5" x 11" card stock (heavy paper works best)
- Color pencils preferred, but crayons are an option
- Pencil
- Scissors
- Glue Stick
- Ruler (optional)



DIRECTIONS

Note: If you have an in-person tour at the Museum and do the art project during your visit, this is a bonus project you can do back in the classroom.

TEACHER NOTES

- The video, [Just Imagine...](#) (Length: TBD), at TBD
- The artist will walk through students through the lesson. The artist will have you and your class watch the video.
- As students watch, encourage them to have their supplies ready and follow along.

BEFORE YOU WATCH (Prompts for Students)

- Imagine you must leave your home to move to a new country.
- What would you bring with you? Brainstorm with your students how that would feel and what they would miss.
- Think of three things you would bring:
 1. What could you not live without? [make suggestions: a favorite toy, pet, person, etc.]
 2. What would you take just for fun? [Make suggestions: a game, a toy, a book, etc.]
 3. What would you take that reminds you of home? [Make suggestions: a photograph, a book, a friend, etc.]

AS YOU WATCH

- You'll need two sheets of a 10" x 12" sheet of white or light color construction paper or 8.5"x 11" white card stock. Fold on e sheet in half so you have a rectangle that is 5.5" x 8.5"
- Follow the directions given in the video (step by step illustrations follow this page) to draw the outside of your suitcase. You can add stickers. You can add a tag with your name on it.
- Follow the directions given in the video (step by step illustrations follow this page) to draw the inside of your suitcase. If the inside of your suitcase is lined with fabric, you can add a pattern in a light color or simply color the background.
- Draw the items you would put in your suitcase on the second sheet of paper – remember this is imaginary, so you can add people and pets. They will survive just fine. You can use crayons or color pencils to color the items you put in your suitcase. If you have time to draw more items, you can.
- When you are finished coloring your suitcase and the contents, from the second sheet of paper, draw handles as directed on one of the following pages and in the video. Cut the handles out and fold as instructed.
- You can attach the handles to your suitcase with tape or glue.

WRITING

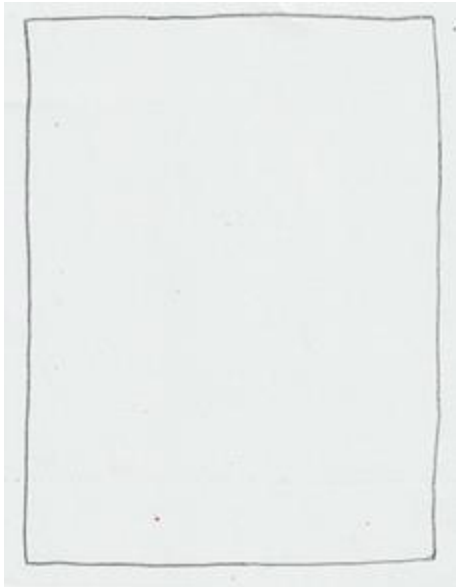
- Write a [lune poem](#) about the things you would bring to your new home.. See the [lune poem](#) slides for directions and samples.
- Share your poem and your art with the class and tell why you chose the items you selected to bring in your suitcase.



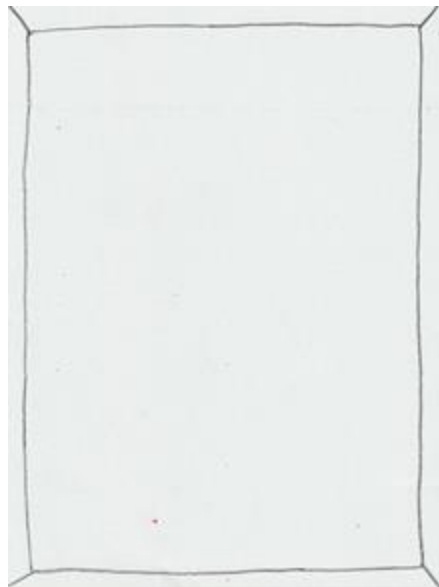
Steps 1 to 4 to create your suitcase.

Sheet 1 – Side 1, Inside of your suitcase

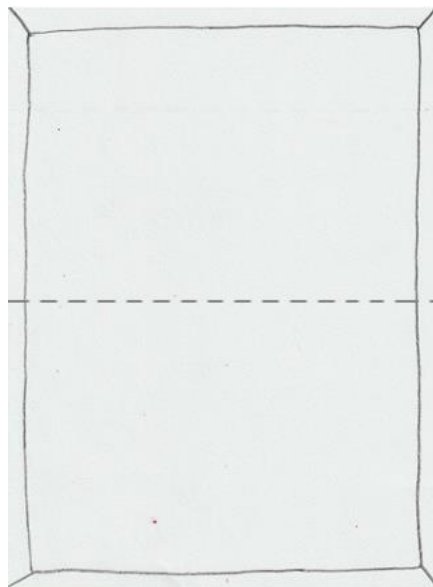
Step 1- Draw rectangle



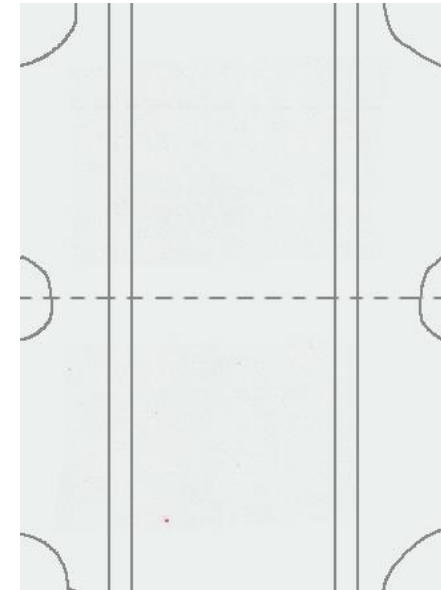
Step 2 – Make it dimensional by making diagonal lines from each corner of the rectangle to the corner of the paper



Step 3 – Fold the paper in half



Sheet 1 – Side 2, Outside of your suitcase



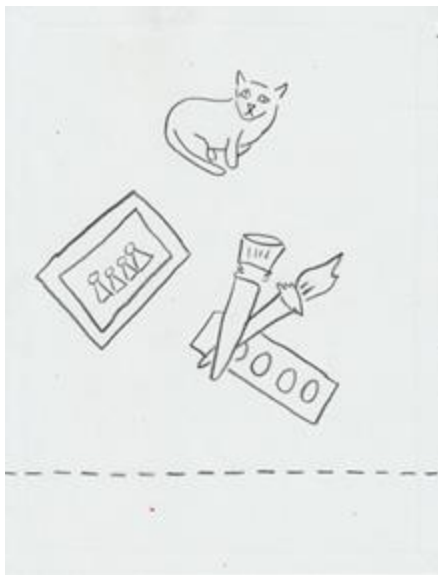
Step 4 – Draw four quarter circles on each corner of the paper and draw two half circles on center edge so fold line is in the middle. Add four vertical parallel lines as shown for straps to keep suitcase closed



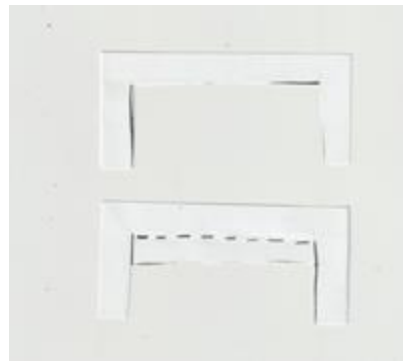
Steps 5 to 8 to create your suitcase.

Sheet 2

Step 5 – on the top 2/3 of your second sheet of paper, draw the items you would take with you in your suitcase.



Step 6 – On the bottom 3rd of your second sheet of paper you will make a two piece handle. Cut along the solid lines, fold on the dotted line. The extra flap on the one handle can be folded up to “close” your suitcase.



Step 7 – Now you can color the outside of your suitcase and the inside. You can add travel stickers to the outside if you like. You can color and glue on your handles, one on each side as illustrated.



Step 8 – You can color the inside of your suitcase with just color or a simple pattern. Next, color and cut out the items you want to put in your suitcase. In our example there is a cat, art supplies, and a family photograph. Glue these items inside your suitcase.





LUNE POEMS

LUNE POEM

A 3-line poem with a set number of words per line. Can be sentence(s) or random words or phrases.

Line 1 – 3 words

Line 2 – 5 words

Line 3 – 3 words

Need my cat
Books are fun to read
Love family portrait

My dog Parker
Music so I can dance
Home is family



LUNE POEMS

LUNE POEM

A 3-line poem with a set number of words per line.

Can be sentence(s) or random words.

Line 1 – 3 words

Line 2 – 5 words

Line 3 – 3 words

Curious and friendly
Looks like a cute doggy
Actually, all trouble

